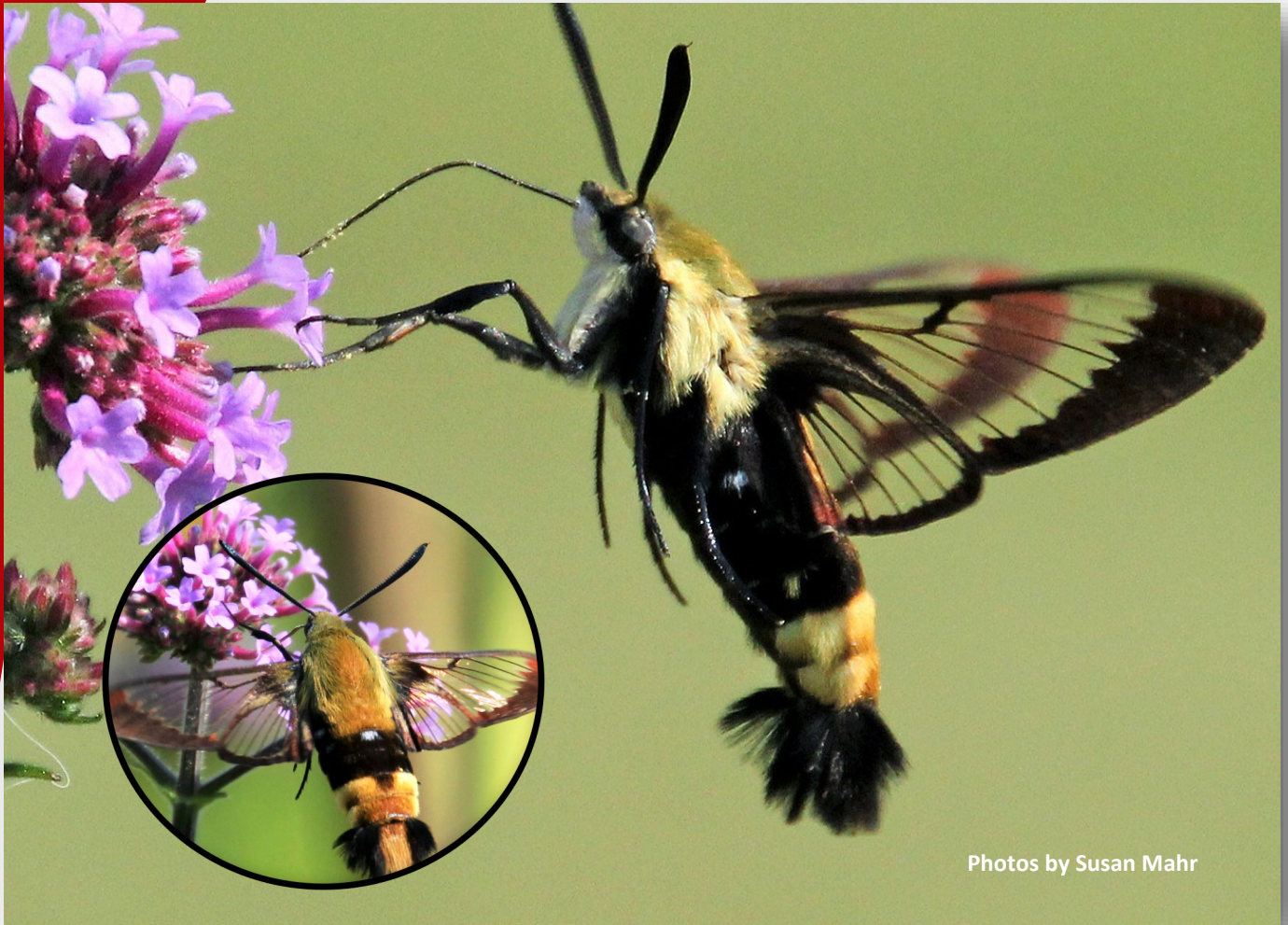


Pollinators of Wisconsin



Photos by Susan Mahr

Hummingbird Moths (*Hemaris spp.*)

- Adults hover like a hummingbird to feed on nectar with long proboscis “tongue”
- Furry yellow or tan body with a band across the abdomen
- “Clearwings” (1½ - 2 in.) lack scales
- Adults can be seen feeding on petunia, bee balm, purple cone flowers
- Caterpillars feed on viburnum and related plants



Scan for more information:



Extension
UNIVERSITY OF WISCONSIN-MADISON