



Extension

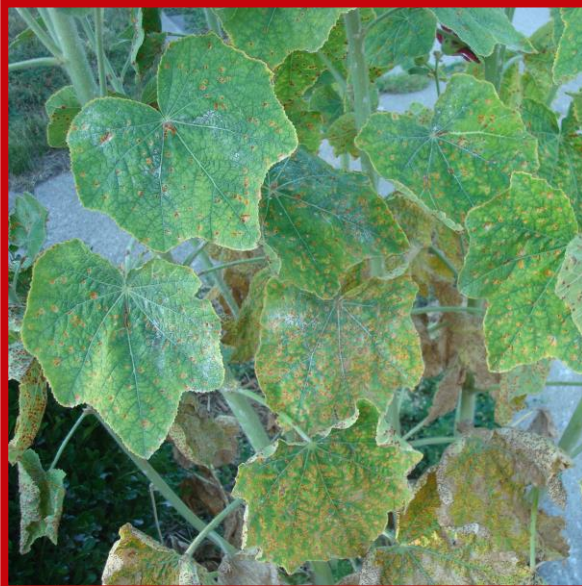
UNIVERSITY OF WISCONSIN-MADISON

Provided to you by:

Hollyhock Rust

Nicole Uelmen*, UW-Madison Plant Pathology

What is hollyhock rust? Hollyhock rust is the most common fungal leaf disease of hollyhocks (*Alcea rosea*). Many other ornamentals (e.g., flowering maple, rose mallow) and weeds (e.g., common mallow) in the mallow family are also susceptible. Hollyhock rust can quickly spread, causing stunting of plants and premature leaf drop. In rare instances, hollyhock rust can result in plant death



Hollyhock rust causes orange to yellow spots on leaves of hollyhock and other plants in the mallow family. (Photo courtesy of Stephanie Porter)

What does hollyhock rust look like?

Initial symptoms of hollyhock rust are orange to yellow spots (roughly $\frac{1}{8}$ to $\frac{1}{4}$ inches in diameter) on lower leaves. Irregular brown areas may also develop on stems. As the disease progresses, brown to dark-red raised “bumps” (fungal reproductive structures called pustules) develop on the undersides of leaves beneath the orange/yellow spots. Severely affected leaves often develop holes that give them a lacy appearance. These leaves may eventually shrivel and die.

Where does hollyhock rust come from?

Hollyhock rust is caused by the fungus, *Puccinia malvacearum* which can be introduced into a garden by windborne spores or on

infected transplants. Further localized spread of spores is possible by wind, by splashing rain, or by splashing water from a sprinkler. Warm and humid temperatures favor the growth of the fungus. *P. malvacearum* can survive the winter in hollyhock leaf and stem debris.

How do I save a plant with hollyhock rust? Once symptoms of hollyhock rust appear, control can be difficult. If you observe the disease very early in its development, remove symptomatic leaves and dispose of them in your municipal garbage (where allowed) or by deep burying them. Consider follow-up fungicide treatments (although such treatments will be most effective when applied before any symptoms appear). If you decide to use fungicides for control, select products that are labeled for use on hollyhocks (or more generally on ornamental flowering plants) and contain the active ingredients chlorothalonil, mancozeb, myclobutanil, tebuconazole, or triticonazole. When making more than one application, DO NOT use the same active ingredient for all treatments. Instead, alternate the use of at least two active ingredients with different modes of action to help minimize problems with fungicide-resistant variants of the hollyhock rust fungus. Myclobutanil,



Extension

UNIVERSITY OF WISCONSIN-MADISON

tebuconazole and triticonazole have similar modes of action and should NOT be alternated with one another. Be sure to read and follow all label instructions of the fungicides that you select to ensure that you use products in the safest and most effective manner possible.



Brown to dark-red bumps on the undersurface of leaves is typical of hollyhock rust. (Photo courtesy of Tom Creswell, Purdue University)

How do I avoid problems with hollyhock rust in the future?

Remove weedy mallow plants (especially common mallow) from your garden; they can serve as a source of *P. malvacearum* spores. Also, be sure to remove all hollyhock debris in the fall to eliminate another place where the fungus can overwinter. Weeds and plant debris can be disposed of as described above. DO NOT use seeds from infected plants and inspect new hollyhock plants for rust symptoms prior to purchase. Some hollyhock varieties are resistant to some, but not all, variants of *P. malvacearum*. Thus use of resistant varieties may not be a reliable method for control of hollyhock rust in all situations. Avoid planting hollyhocks densely to allow better air circulation that will promote more rapid

drying of plants, as well as reduced humidity. Water and fertilize properly to promote optimal growth of your hollyhocks. DO NOT water with a sprinkler as this will wet leaves; use a soaker or drip hose that applies water directly to the soil. Fertilize only when needed based on a soil fertility test.

For more information on hollyhock rust: Contact your county Extension agent.

*Completed as partial fulfillment of the requirements for Plant Pathology 558 at the University of Wisconsin Madison.

© 2014-2019 by the Board of Regents of the University of Wisconsin System doing business as the division of Cooperative Extension of the University of Wisconsin Extension.

An EEO/Affirmative Action employer, University of Wisconsin Extension provides equal opportunities in employment and programming, including Title IX and ADA requirements. This document can be provided in an alternative format by calling Brian Hudelson at (608) 262-2863 (711 for Wisconsin Relay).

References to pesticide products in this publication are for your convenience and are not an endorsement or criticism of one product over similar products. You are responsible for using pesticides according to the manufacturer's current label directions. Follow directions exactly to protect the environment and people from pesticide exposure. Failure to do so violates the law.

Thanks to Diana Alfuth, Adam Chanto, Lisa Johnson, Allison Pfeifer, Scott Reuss, Hilda Uelman and Johnny Uelman for reviewing this document.

A complete inventory of University of Wisconsin Garden Facts is available at the University of Wisconsin-Madison Division of Extension Plant Disease Diagnostics Clinic website: <https://pdcd.wisc.edu>.